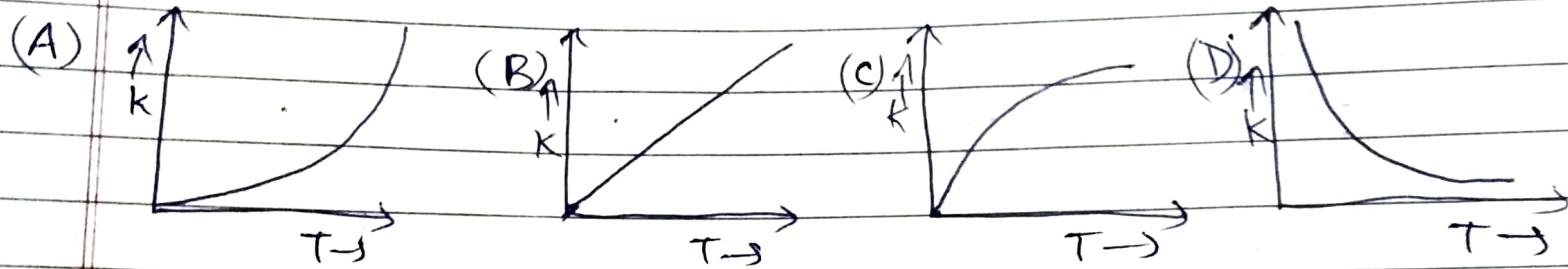


Q- Which one of the following graphs represent the variation of rate constant (K) with temperature (T) for an endothermic reaction? [JEE Main 2021 (Online)]



Ans: (A)

Explanation: Arrhenius Equation: $k = Ae^{-\frac{E_a}{RT}}$
∴ for an Endothermic reaction, (E_a) is positive