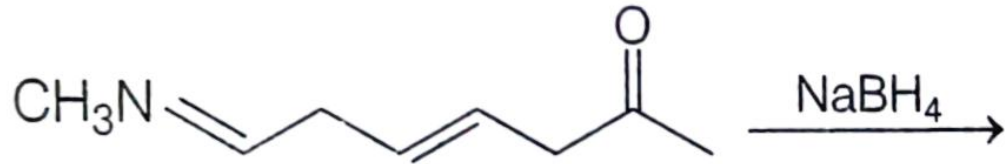
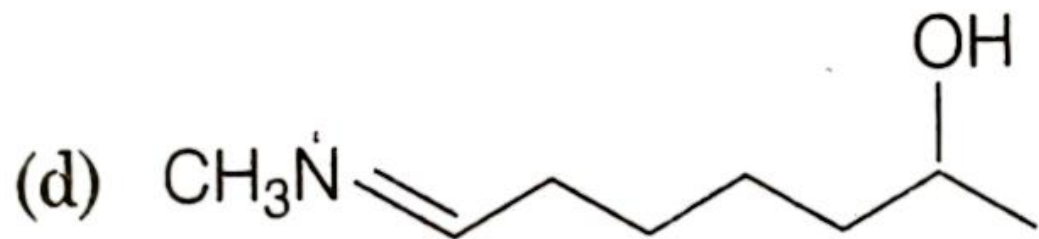
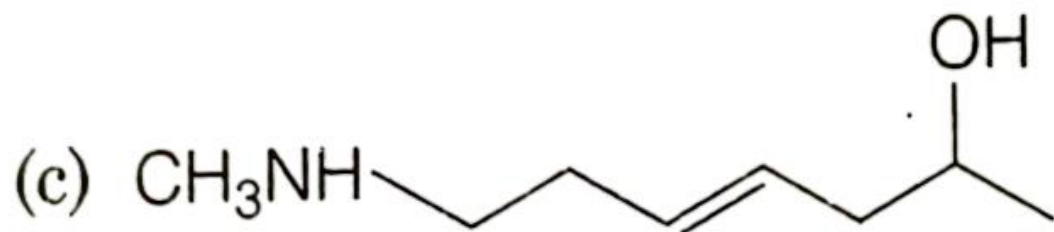
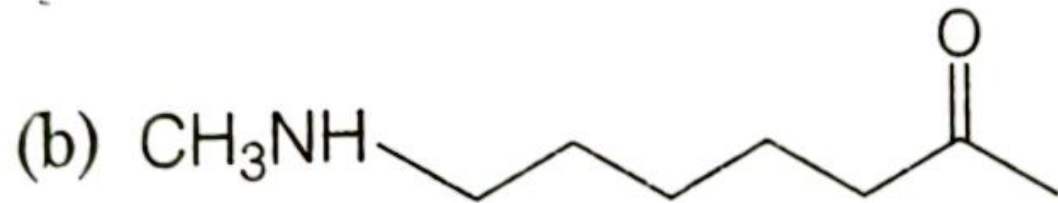
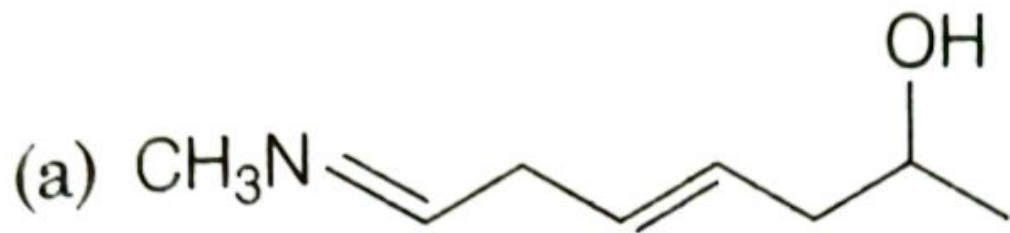


9. The major product of the following reaction is
(2019 Main, 10 Jan II)





9. NaBH_4 is a selective reducing agent. It can reduce >C=O group into alcohol, N-methyl imine group, $\text{Me}-\text{N}=\text{CH}-$ into 2° -amine but cannot reduce an isolated $\text{C}=\text{C}$.

