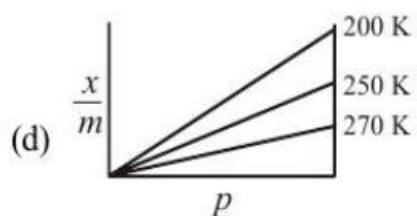
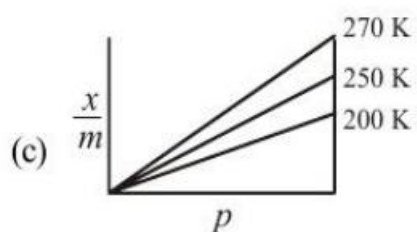
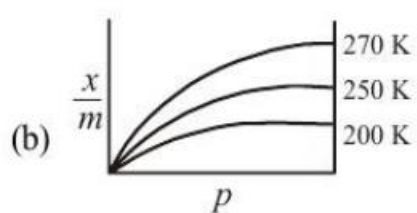
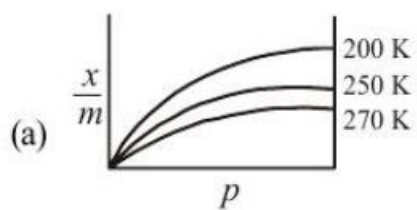


2. Adsorption of a gas follows Freundlich adsorption isotherm. If  $x$  is the mass of the gas adsorbed on mass  $m$  of

the adsorbent, the correct plot of  $\frac{x}{m}$  versus  $p$  is :

[Sep. 05, 2020 (II)]



Ans. (a)

2. (a) As adsorption is exothermic process, hence  $\frac{x}{m}$  decreases with increase of temperature.