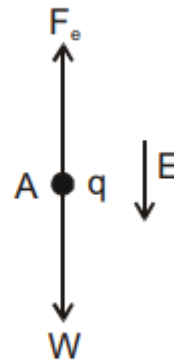


Problem 3) Calculate the electric field intensity which would be just sufficient to balance the weight of a particle of charge  $-10\mu\text{C}$  and mass  $10\text{ mg}$ . (Take  $g = 10\text{ ms}^{-2}$ )

Solution:-

As force on a charge  $q$  in an electric field  $\vec{E}$  is  $\vec{F}_q = q\vec{E}$

So, according to given problem:



[ $W$  = weight of particle]

$$|\vec{F}_q| = |\vec{W}| \quad \text{i.e.,} \quad |q|E = mg$$

$$\text{i.e., } E = \frac{mg}{|q|} = 10\text{ N/C.}, \text{ in downward direction.}$$