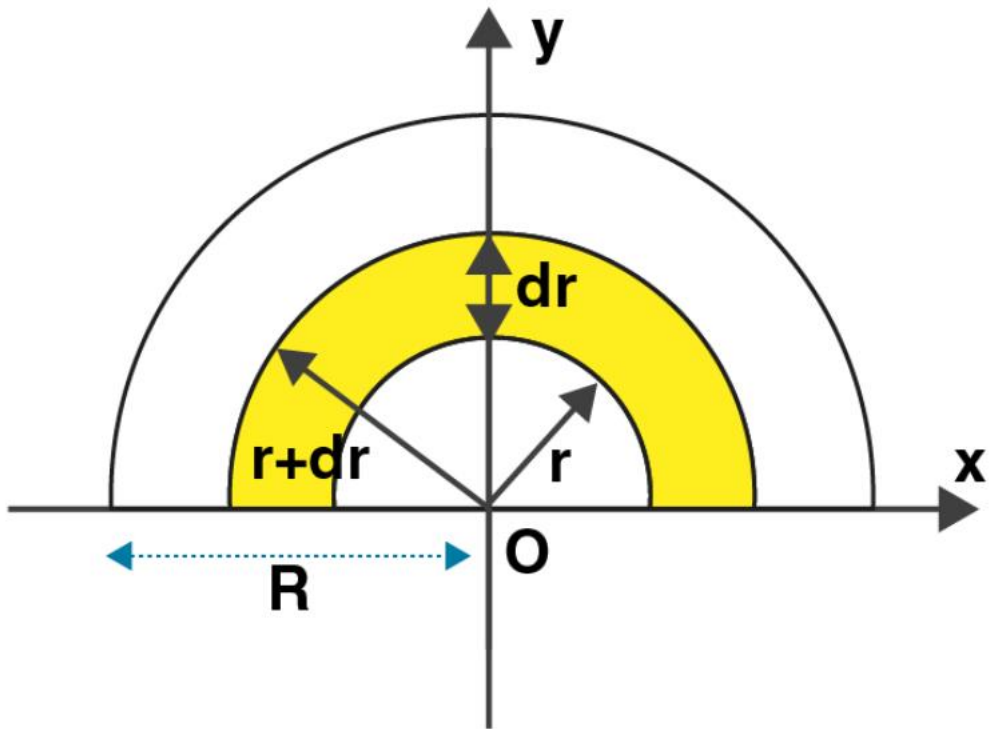


7.23. Find the centre of mass of a uniform

- a) half-disc
- b) quarter-disc

Answer:



## Answer

---

Let  $M$  be the mass of the half-disc

Area of the half-disc =  $\pi R^2/2$

Mass per unit area  $m = 2M/\pi R^2$

a) when the disc is half, the centre of mass is  $(0, 4R/3\pi)$

b) when the disc is quarter, the centre of mass is  $(4R/3\pi, 4R/3\pi)$