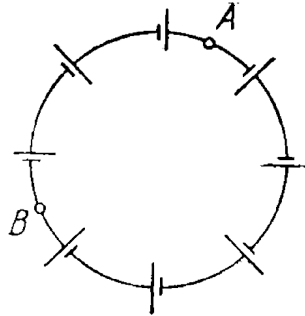


Problem) N sources of current with different emf's are connected as shown in figure. The emf's of the sources are proportional to their internal resistances, i.e. $E = R$, where k is an assigned constant. The connecting wire resistance is negligible. The potential difference between points A and B dividing the circuit in n and $N - n$ links:



- 1) 0
- 2) $nE/2$
- 3) NE
- 4) $(N - n)E$