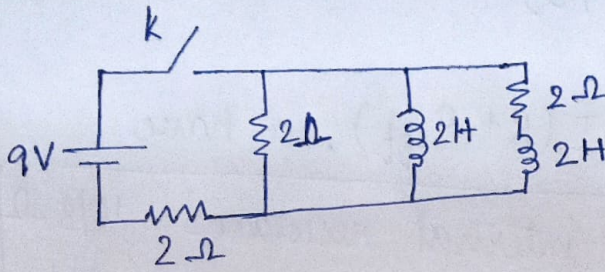


JEE PROBLEMS

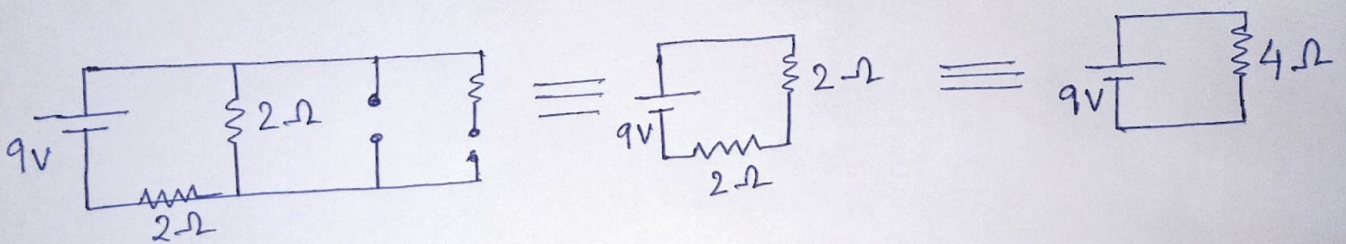
JEE MAIN - 2021

Q. Find the current through the battery just after the key is closed.



- (a) $\frac{9}{4}$ A (b) $\frac{9}{2}$ A (c) 9 A (d) None of these

Answer: The equivalent circuit (\because no current flow through inductor immediately)



$$\begin{aligned}\therefore I &= \frac{V}{R_{eq}} \\ &= \frac{9}{4} \text{ A}\end{aligned}$$

\therefore correct option - (a)